



General Features

Description: Recessed LED product

Insulation class: class II

Rated voltage: 230 V 50 Hz

Protection Grade: IP65

Impact protection: IK06

Power Factor: > 0.90

Ambient temperature Ta: -30°C +50°C

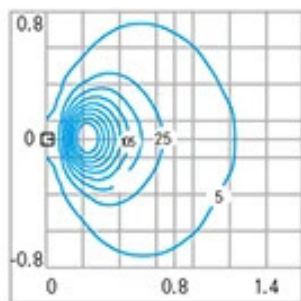
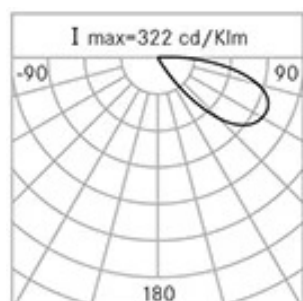
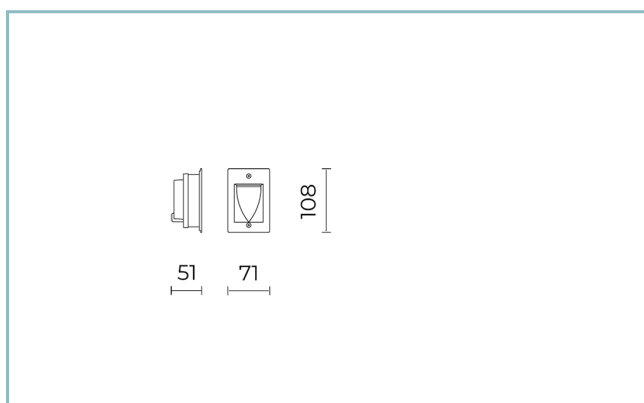
Weight: 0.30 kg

Max exposed surface: 0,06 m²

Lateral exposed surface: 0,005 m²

Drivers: included

Marks and Certifications: CE



Performance Data*

Source flow:	300 lm
Source power:	4 W
Source efficiency:	75 lm/W
Device flow:	95 lm
Device power:	4.5 W
Appliance efficiency:	21 lm/W

Product Sheet

Rev. 17/01/2023

Fin xs Wall-Recessed

Options: FIN XS-vertical

Color Temperature: 3000 K

Type of optics: asymmetrical wide beam AS-D

06FX2B2397C

Colour: Sablé 100 Noir

Optical System

Source: LED

Color Temperature: 3000 K

Color Rendering Index (CRI): ≥ 80 Color Consistency (SDCM): ≤ 3

Type of optics: asymmetrical wide beam AS-D

Optical group life: >35.000h @Ta25°C L80B10

Normative References

EN60598-1 / EN60598-2-2 / EN62471

Installation and maintenance

Installation: recessed

Fixing: Wall-recessed housing: polymer printed provided with the product

Ø power cable: 8 ÷ 12 mm

Cable gland: M20

Materials

Body: die-cast aluminium alloy UNI EN AB 47100 (copper content < 1%)

Diffuser: sandblasted flat glass

Seals: EPDM die cut / printed

Screws: stainless steel AISI 304

Finish: phospho-chromatation treated and polyester powder-coated in 16 phases to increase weather resistance

Colors Sablé 100 NoirCode: **06FX2B2397C**

Product Sheet

Rev. 17/01/2023

Fin xs Wall-Recessed

Options: FIN XS-vertical

Color Temperature: 3000 K

Type of optics: asymmetrical wide beam AS-D

06FX2B2397CColour: Sablé 100 Noir

NOTES***Performance data**

The values indicated in this data sheet are nominal values with a tolerance of +/-7%.

Source flux and source efficiency data refer to the LED module without optics; in case you are interested in the performance of the LED module complete with optical system, you must multiply the data reported by the factor 0.9.

General Data

The characteristics of the product listed may be subject to change and must be confirmed when ordering.

In order to promote constant updating of its products, Cariboni Group reserves the right to make changes without prior notice.