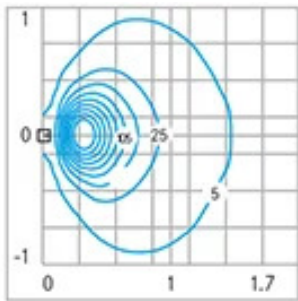
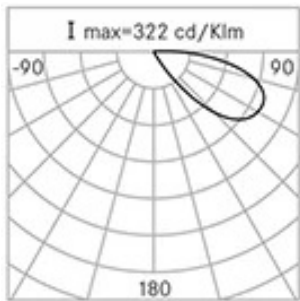




**General Features**

Description:	Recessed LED product
Insulation class:	class II
Rated voltage:	230 V 50 Hz
Protection Grade:	IP65
Impact protection:	IK06
Power Factor:	> 0.90
Ambient temperature Ta:	-30°C +50°C
Weight:	0.30 kg
Max exposed surface:	0,06 m²
Lateral exposed surface:	0,005 m²
Driver:	included
Marks and Certifications:	CE



**Performance Data\***

Source flow:	300 lm
Source power:	4 W
Source efficiency:	75 lm/W
Device flow:	95 lm
Device power:	4.5 W
Appliance efficiency:	21 lm/W

## Product Sheet

Rev. 23/07/2024

## Fin xs Wall-Recessed

Options: FIN XS-horizontal

Color Temperature: 4000 K

Type of optics: AS-D Asymmetric diffused beam

## 06FX1B2307D

Colour: White RAL9003

### Optical System

Source: LED

Color Temperature: 4000 K

Color Rendering Index (CRI):  $\geq 80$

Chromatic consistency (SDCM):  $\leq 3$

Type of optics: AS-D Asymmetric diffused beam

Optical group life:  $>35.000\text{h}$  @Ta25°C L80B10

### Normative References

EN60598-1 / EN60598-2-2 / EN62471

### Installation and maintenance

Installation: recessed

Fixing: Wall-recessed housing: polymer printed provided with the product

Ø power cable: 8 ÷ 12 mm

Cable gland: M20

### Materials

Body: die-cast aluminium alloy UNI EN AB 47100 (copper content  $< 1\%$ )

Diffuser: sandblasted flat glass

Seals: EPDM die cut / printed

Screws: stainless steel AISI 304

Finish: phospho-chromatation treated and polyester powder-coated in 16 phases to increase weather resistance

### Colors

■ White RAL9003

Code: **06FX1B2307D**

---

**Product Sheet**

Rev. 23/07/2024

**Fin xs Wall-Recessed**

Options: FIN XS-horizontal

Color Temperature: 4000 K

Type of optics: AS-D Asymmetric diffused beam

**06FX1B2307D**Colour: White RAL9003

---

---

**NOTES****\*Performance data**

The values indicated in this data sheet are nominal values with a tolerance of  $\pm 7\%$ .

Source flux and source efficiency data refer to the LED module without optics; in case you are interested in the performance of the LED module complete with optical system, you must multiply the data reported by the factor 0.9.

**General Data**

The characteristics of the product listed may be subject to change and must be confirmed when ordering.

In order to promote constant updating of its products, Cariboni Group reserves the right to make changes without prior notice.